

LiberoPro

Flat Induction 1 Phase, mono zone, drop in - UK Plug

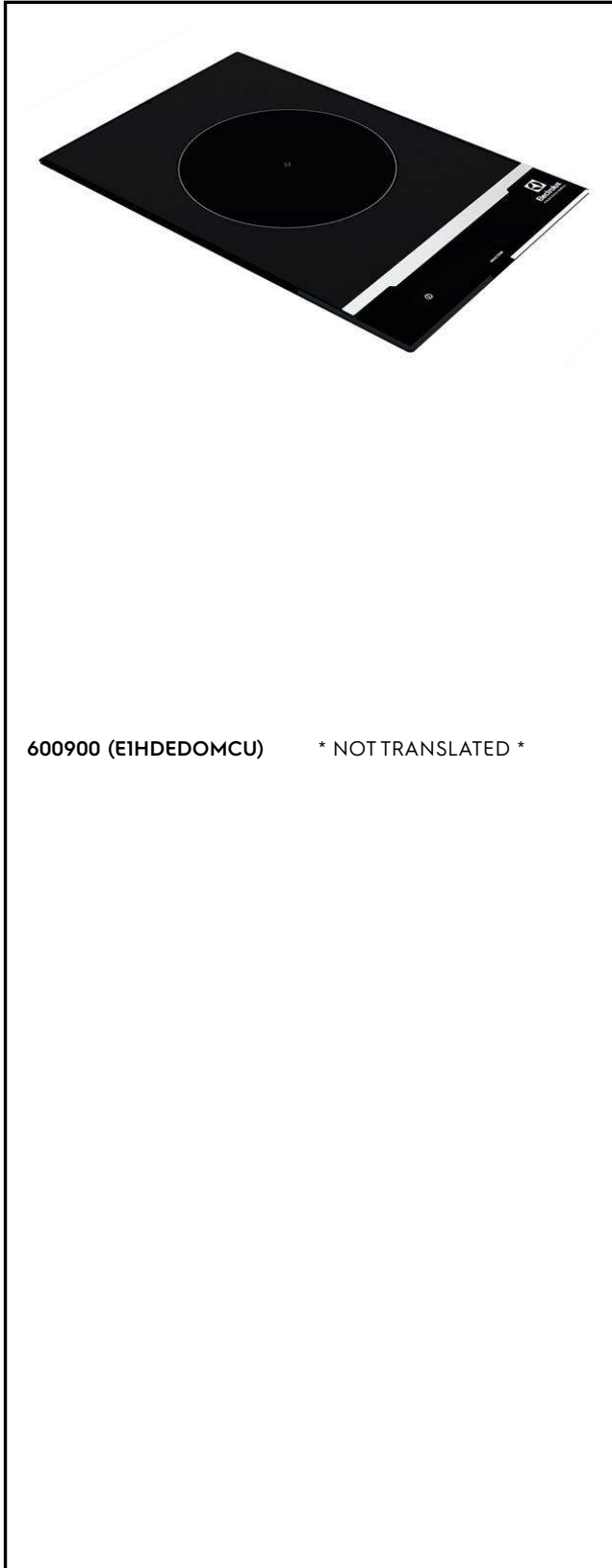
ITEM # _____

MODEL # _____

NAME # _____

SIS # _____

AIA # _____



600900 (EIHDEDOMCU) * NOT TRANSLATED *

Main Features

- Plug in unit designed for drop in installations.
- 2-color user interface (white and red) for better readability.
- Rapid heat transfer directly to the pan, no heat is dispersed into the environment.
- Automatic pan detection to transfer power only when pan is present.
- Glass touch display on top for maximum visibility.
- Power level settings from 1 to 10.
- Timer function can be used to set the cooking time, switching off the zone automatically at the end of the time set.
- Suitable for pot and pan with diameter from 120 mm to 340mm.
- Self-diagnostics: an error code is displayed (Exxx) in case of dysfunction.
- Sealed heavy duty glass-ceramic cooking surface, 4 mm in thickness.

Construction

- Heavy duty AISI 304 Stainless steel construction.
- Cord and plug included.
- IPX4 water resistance certification.

Sustainability

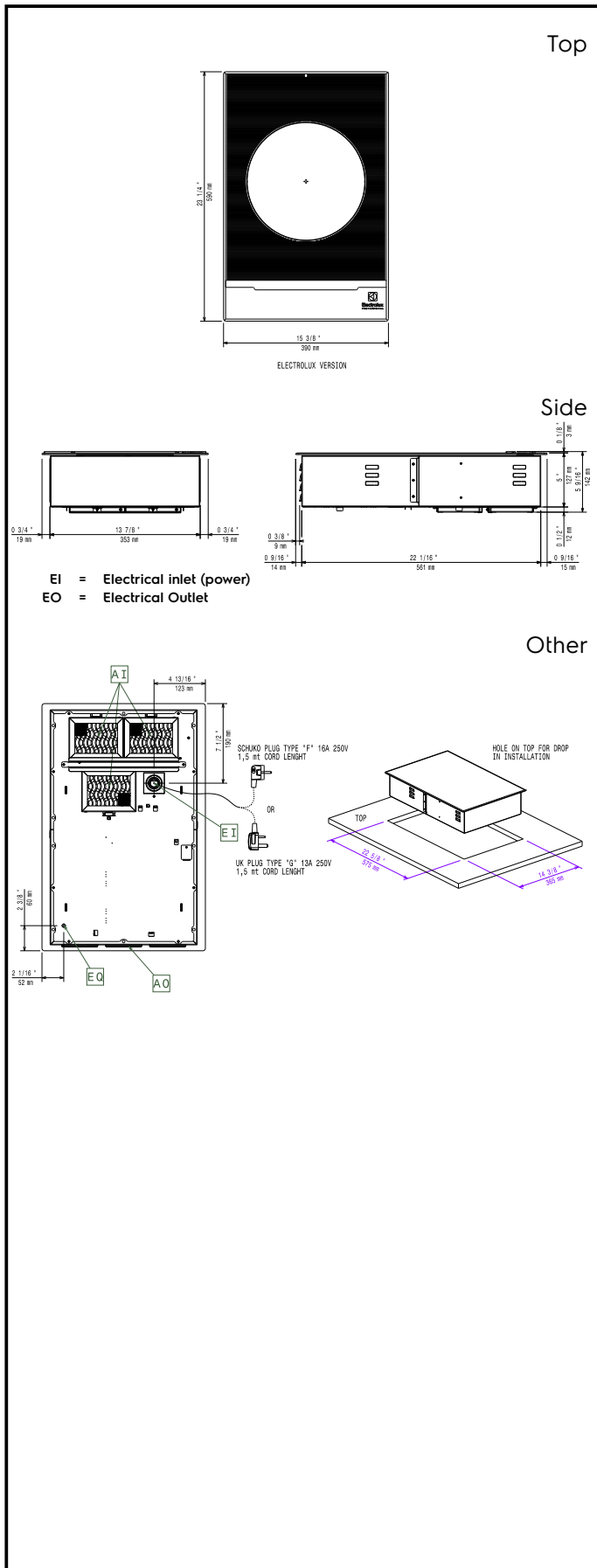
- [NOT TRANSLATED]



Optional Accessories

- - NOT TRANSLATED - PNC 650146
- - NOT TRANSLATED - PNC 650147
- Stainless steel universal frying pan with stainless steel handle (diam. 200mm) suitable for induction and all other heating sources PNC 653596
- Universal frying pan with stainless steel handle (diam. 240mm) suitable for induction and all other heating sources PNC 653597
- Universal frying pan with stainless steel handle (diam. 280mm) suitable for induction and all other heating sources PNC 653598
- Universal frying pan with ribbed plate suitable for induction cookers PNC 653618

APPROVAL: _____



Electric

Supply voltage:	600900 (EIHDEDOMCU)	220-240 V/1N ph/50-60 Hz
Total Watts:		3 kW
Plug type:		UK-13A
Minimum Circuit Ampacity (MCA):		13A

Key Information:

External dimensions, Width:	392 mm
External dimensions, Depth:	592 mm
External dimensions, Height:	127 mm
Net weight:	14.5 kg